

WHITEPAPER

NITU AI

TRADING & EARN

Artificial Intelligence Trends 2023



Elon Musk 

@elonmusk

Membalas @SmokeAwayyy

Big year for AI

11:58 · 23 Jan 23



Jay of SWIRGE  @MrJaycrypto · 25 thg 1

Truly gonna be a **Big year for AI**

 3

 3

 16





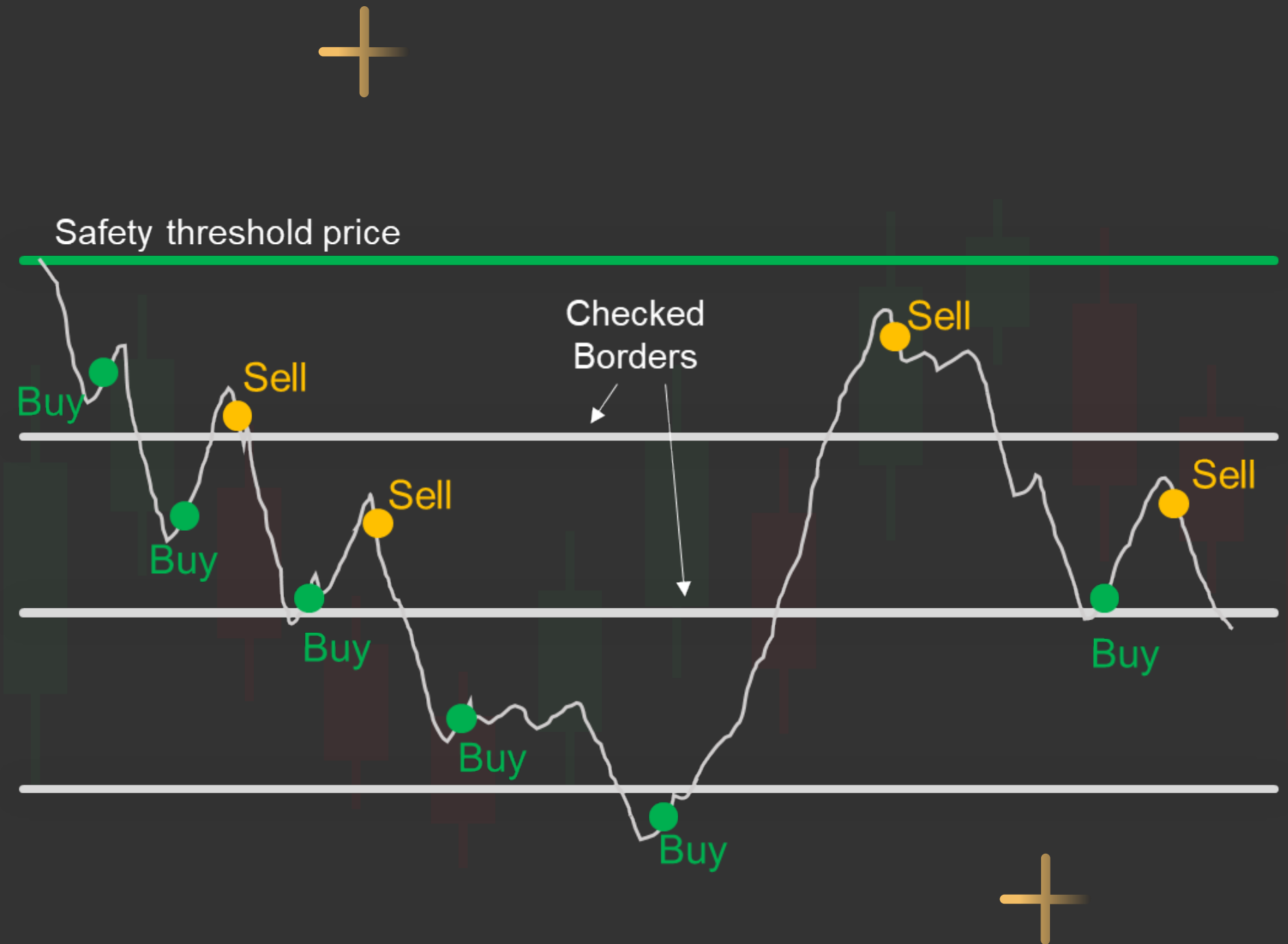
What is Nitu AI?

Nitu is an automated trading technology that helps traders to make profits 24/7 in the Crypto market. With a safe capital management method, it will help traders make profits in highly volatile market situations.

HOW

Nitu AI Trade?

NituAI will review the list of selected coins on the exchange to find coins with good BUY signal, then based on the evaluation criteria to allocate buying capital in accordance with the user's capital and liquidity volume of the market



WHAT IS a good buy signal?

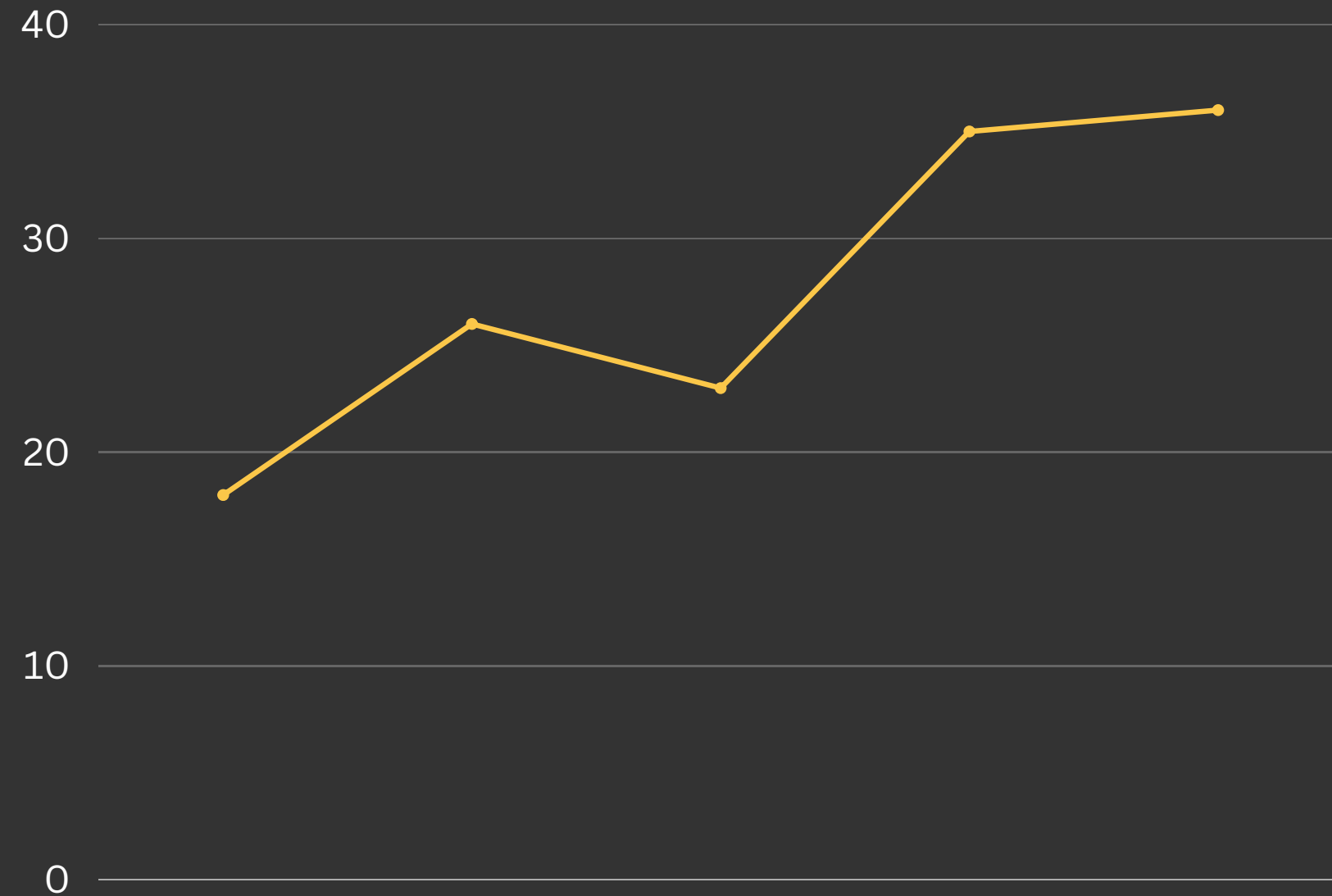
For NituAI, a good buy signal must meet the following criteria

- Threshold price zone
- Buying and selling
- Order Limit Psychology
- Active coin rate
- Liquidity volume
- News & Fomo



Threshold price zone

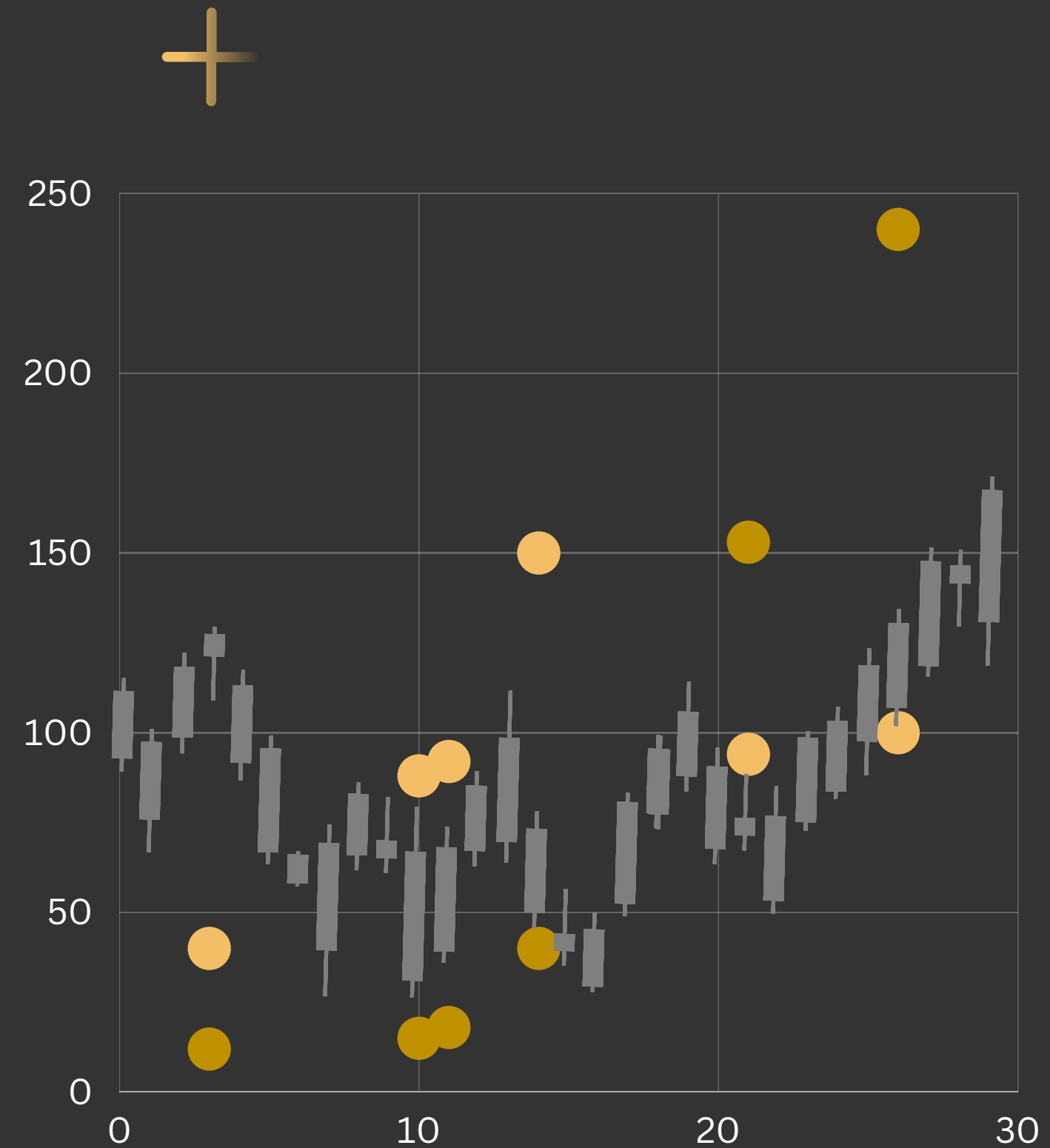
Each coin is analyzed by NituAI based on the factors of Total Circulating Supply, inflation or deflation rate, Market capitalization, trading volume, sector, market share, community follow, product... to offer a valuation in different times, when the coin price falls below the threshold price, it is considered as a potential to buy.



FORCE

BUYING & SELLING

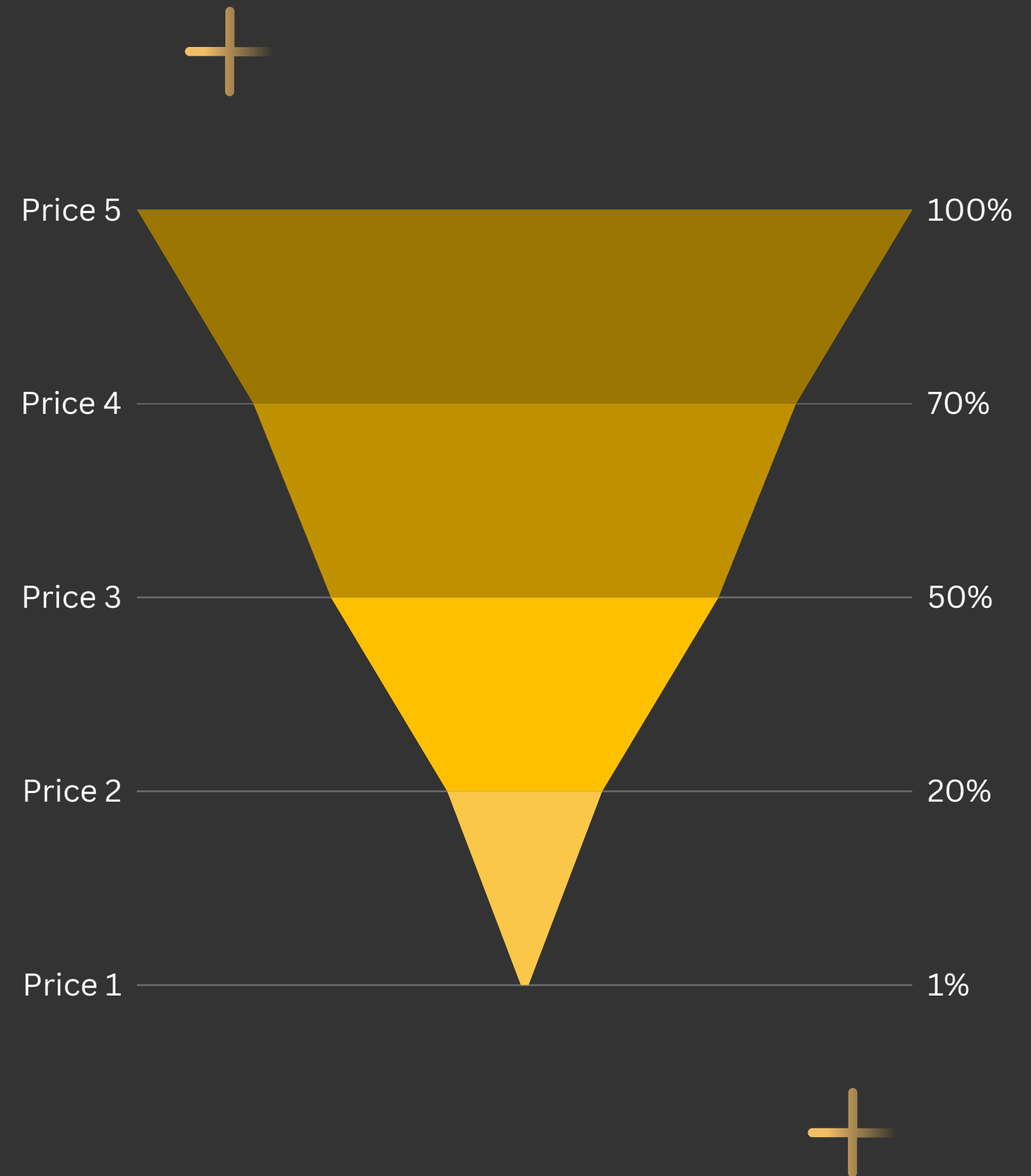
The price of a coin that wants to grow needs Buying Power greater than Selling Power, so NituAI will rely on technical metrics like Footprint, Historical Orders Limit, and Popular Support Direction Indicators to Determine Price Buy at hard data regions



Psychology

ORDER LIMIT

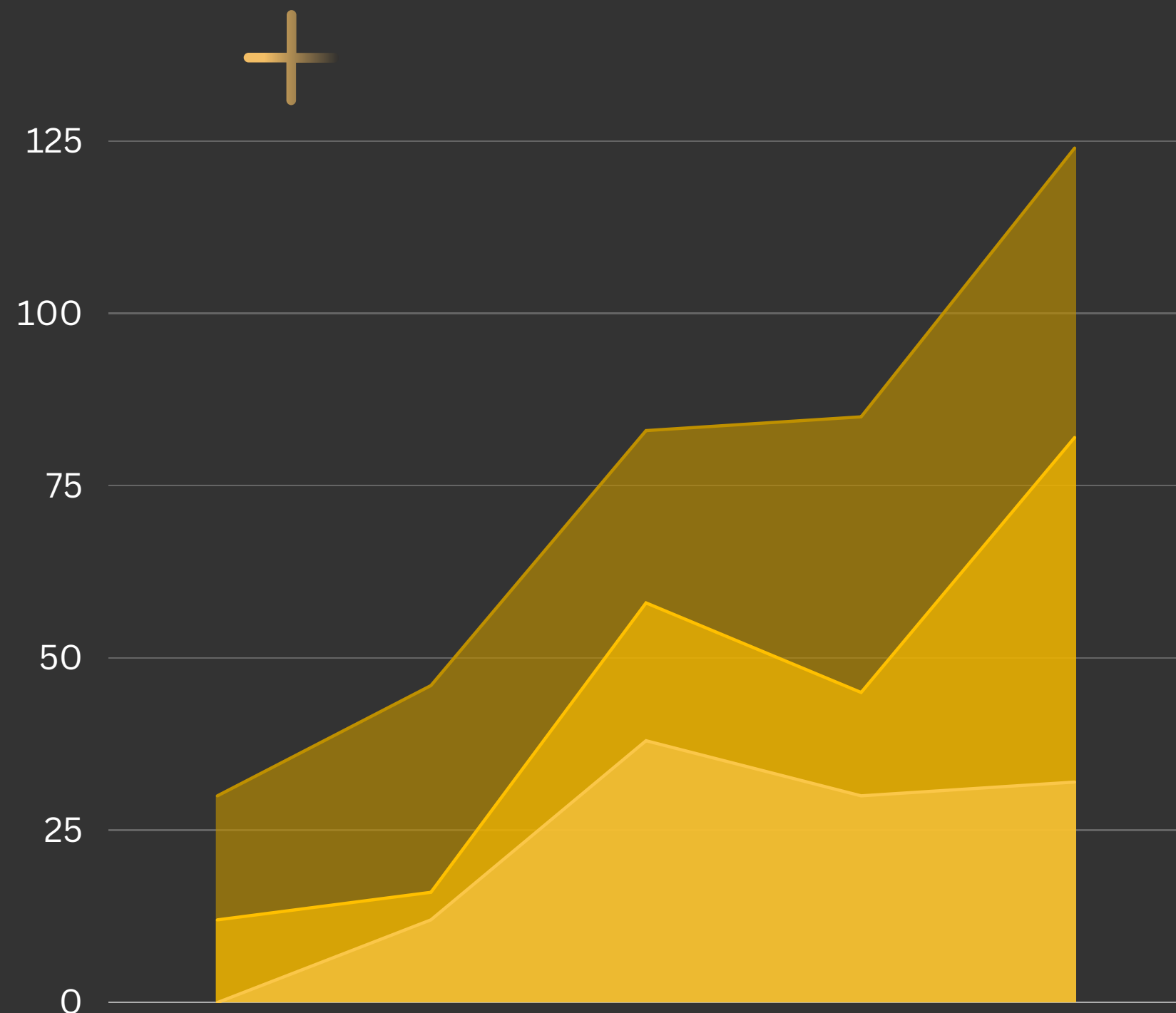
This indicator helps to identify the short term Resistance levels from which NituAI will calculate the minimum expected profit rate that can be achieved in the short term



RATE

ACTIVE COIN

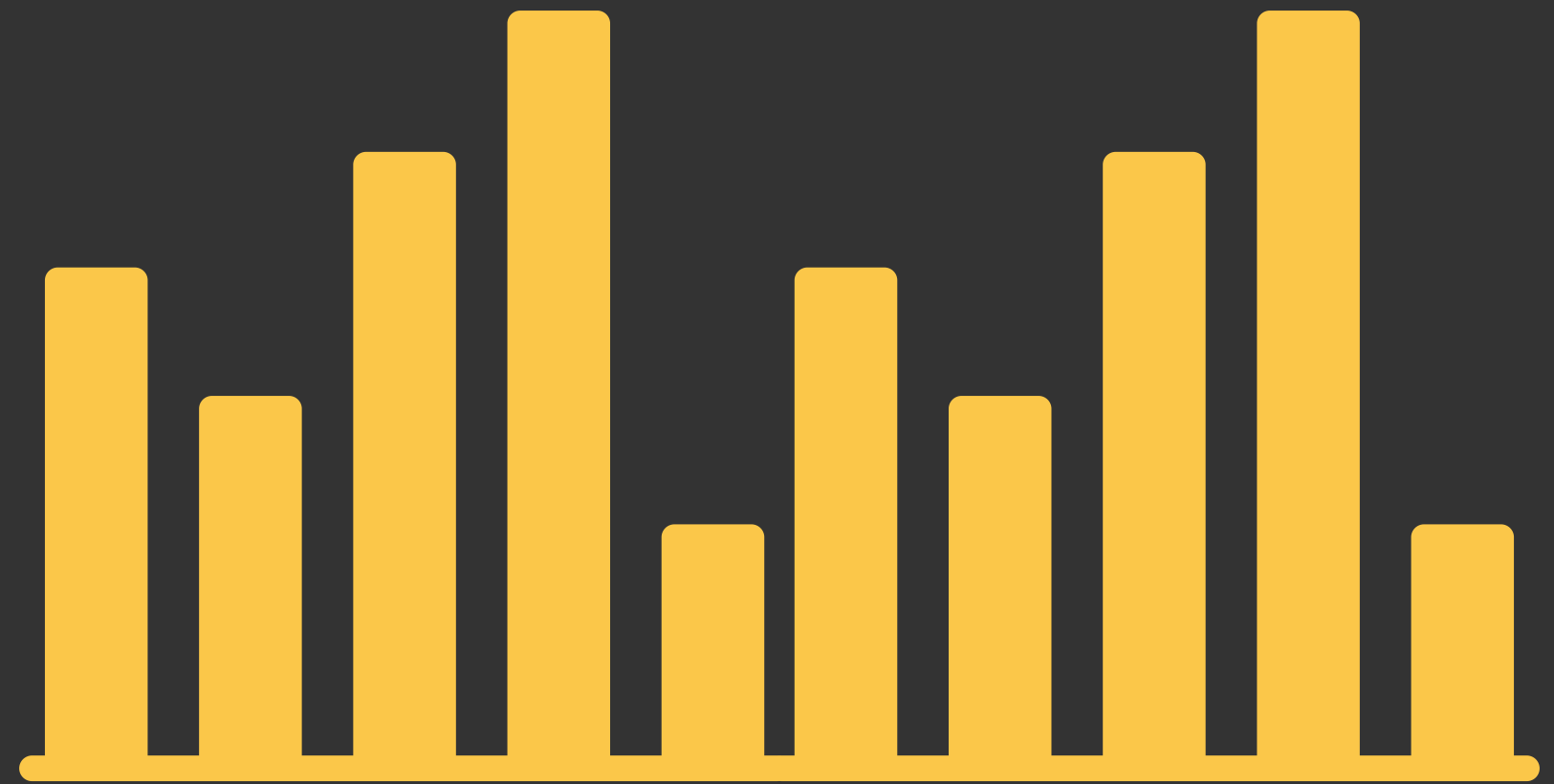
NituAI will review the history of Onchain and OnceX to measure the actual number of active coins in circulation, thereby providing the level of risk that can be further reduced at the price zone and allocating capital appropriately for the next price areas



LIQUIDITY

VOLUME

NituAI will rely on the trading volume of the coin to determine the liquidity and then offer the appropriate capital to the user's capital



NEWS & FOMO

NituAI will statistic the number of Hashtags about the coin on Twitter to measure the amount of Fomo Buy or Fomo Sell rates from which to calculate the effective % Trailing Stop to take advantage of the inertia of the Fomo rate





Performance

Nitu AI 2019-2022

>25%
Per month*

5+
Exchangs**

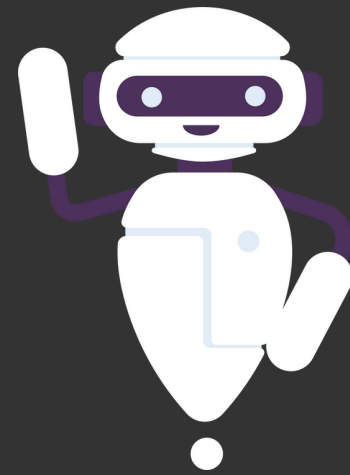
125+
Crypto

*Calculated on the amount of capital NITU AI used to enter the actual order

**Nitu AI uses trading volume data of the 5 largest exchanges: Binance, Huobi, Kucoin, OKX, Bybit



Why Nitu AI



CAPITAL EFFICIENCY

Increase capital efficiency many times compared to manual trading

With the same capital, but when trading with Nitu AI will help you trade more Crypto coins than manual trading.

24/24

Nitu AI helps you keep abreast of market fluctuations 24/7

No manual trader in the world can keep a close eye on the market 24/7, while the market can fluctuate at any time.

DATA

Nitu AI trades using the numbers of Buy and Sell forces

Nitu AI relies on actual numbers of Buy and Sell forces to make decisions to enter or take profits, which makes trading more efficiently.

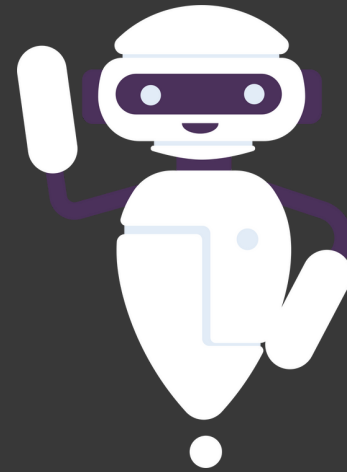
RULES

Nitu AI is not ruled by Greed & Fear

The reason why traders do not take profits is Greed and do not dare to enter orders is Fear. Many missed opportunities because of this.



Why Nitu AI



#	Symbol	Funds	Expected Profit	Profit
+	HFTUSDT	\$3,000	\$19.987654	▲ 21.60905
+	GRTUSDT	\$3,000	\$15.998388	▲ 17.2194
+	GALAUUSD	\$3,000	\$19.99932	▲ 20.165
+	STXUSDT	\$3,000	\$19.999402	▲ 26.68472
+	TRUUSDT	\$3,000	\$39.995685	▲ 52.1223
+	FXSUSDT	\$2,992.5	\$9.444375	▲ 11.1779
+	GMXUSDT	\$3,000	\$11.999583	▲ 14.97636
+	FILUSDT	\$3,000	\$12.00373	▲ 22.51976
+	MAGICUSDT	\$2,992.5	\$25.194646	▲ 25.41993
+	VGXUSDT	\$3,000	\$9.999225	▲ 10.5255
+	GALAUUSD	\$2,992.5	\$6.299273	▲ 7.13368
+	LQTYUSDT	\$3,000	\$44.995686	▲ 47.4832

CRYPTO CHOICES

Traders actively choose Crypto coins

Each Crypto on the Nitu AI list has been checked for the best Wave range and metrics to trade. You can choose all

FUNDING RIGHT

Traders take initiative in setting trading capital

You actively allocate capital for each Crypto coin and have the right to set the Total Capital Used for Nitu AI

ENDING RIGHT

Traders are entitled to turn off Nitu AI at any time

You have the right to turn off trading of individual Crypto coins or all at any time, this does not affect other benefits.

SAFETY

Nitu AI can't withdraw money in your account

Nitu AI only needs to be granted 2 Spot View and Trade permissions in connected Api, please don't give Nitu AI withdrawal permission



Free version

Nitu AI provides a free version for the community to experience. Paid version will launch in phase 2 with many advanced features

The condition for NituAI to work is Credit Wallet Balance greater than 50\$

Instructions to register & connect with Nitu AI

1

Sign up

- Visit nitu.trade or referral link to sign up for a free account

2

Connect API KEY

- Generate API KEY on Binance
- Sign In Nitu AI
- Select Nitu AI+
- Select Connect API
- Enter API KEY & Secret KEY

3

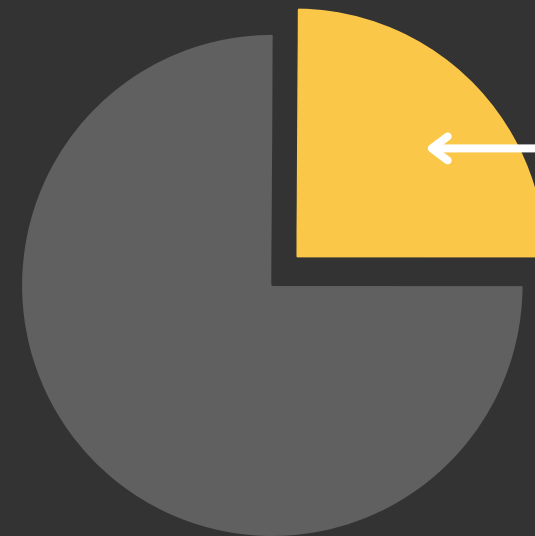
Top up Credit

- Sign In Nitu AI
- Select + to Top up Credit
- Balance >50\$ Nitu AI works
- Balance >100\$ enjoy full Affiliate policy

4

Capital Settings

- Select Nitu AI+
- Select Crypto
- Specify trading capital
- Click Submit to complete

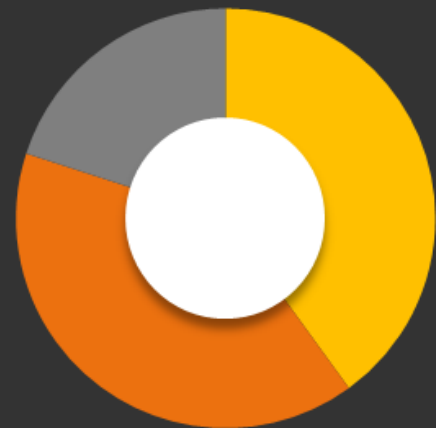





Nitu AI will collect **25%** on every profitable trade. Direct deduction on Credit Wallet

REWARD for using NituAI

For every profitable Nitu AI transaction on the exchange, the account holder will receive an additional reward of NIT Token. This is the Token used for the project's ecosystem. This model is called Trade and Earn

Distributing 25% of revenue sharing profit

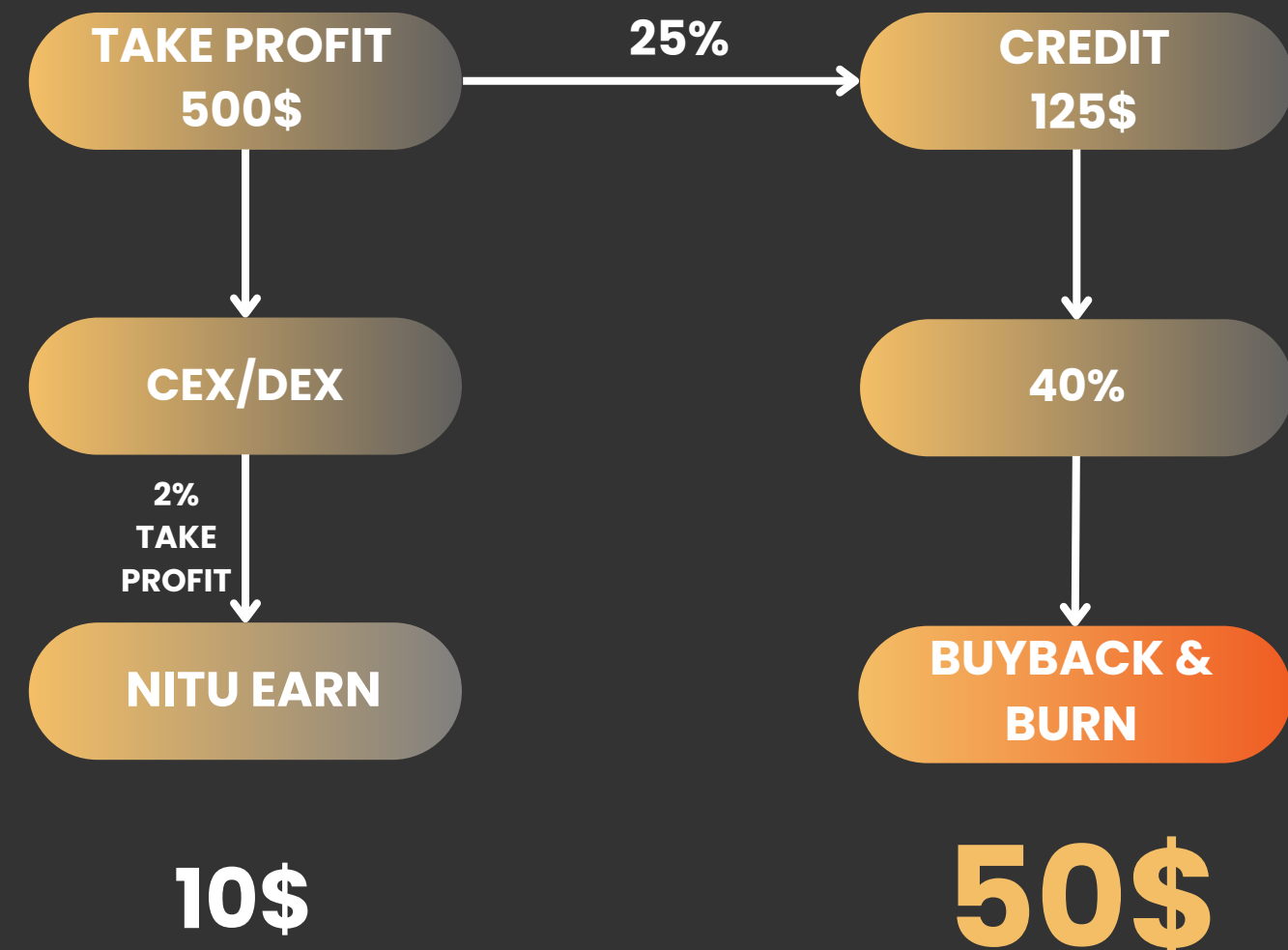


-  Buy Back & Burn 40%
-  Affiliate Marketing 40%
-  Technology Operation 20%



Trading To Earn's deflationary model

Buyback & Burn ratio is many times bigger than Trading reward ratio. This helps NIT Token to deflate sharply and gradually become scarce in the market. The stronger the Transaction and Monetization model, the more deflationary NIT Token will be



Tokenomic



STARTING FUEL

The first 2,100,000 NIT will be used as starter fuel for the first 1050 NFT release.



LISTING DEX & CEX

10,500,000 NIT will be used to listing DEX & CEX



MINING

197,400,000 NIT will be mined by NITU NFT. The Trading To Earn feature is also a form of NIT Token mining



Application **NIT Token**

- Fuel to activate NFT Mining
- Means of payment on N-Market
- Pay for using special functions of Nitu AI Plus
- Credit fee payment
- Rewards for Nitu AI users
- Means of exchange and staking in NituGame
- Rewards for Staking & Farming Programs
- Vote for management events and develop the project's products





NFT MINING

Mining activation conditions

- Lock Nitu NFT
- Burn 2000 NIT token

Speed Mining:
45 NIT / day



Starting price

\$100

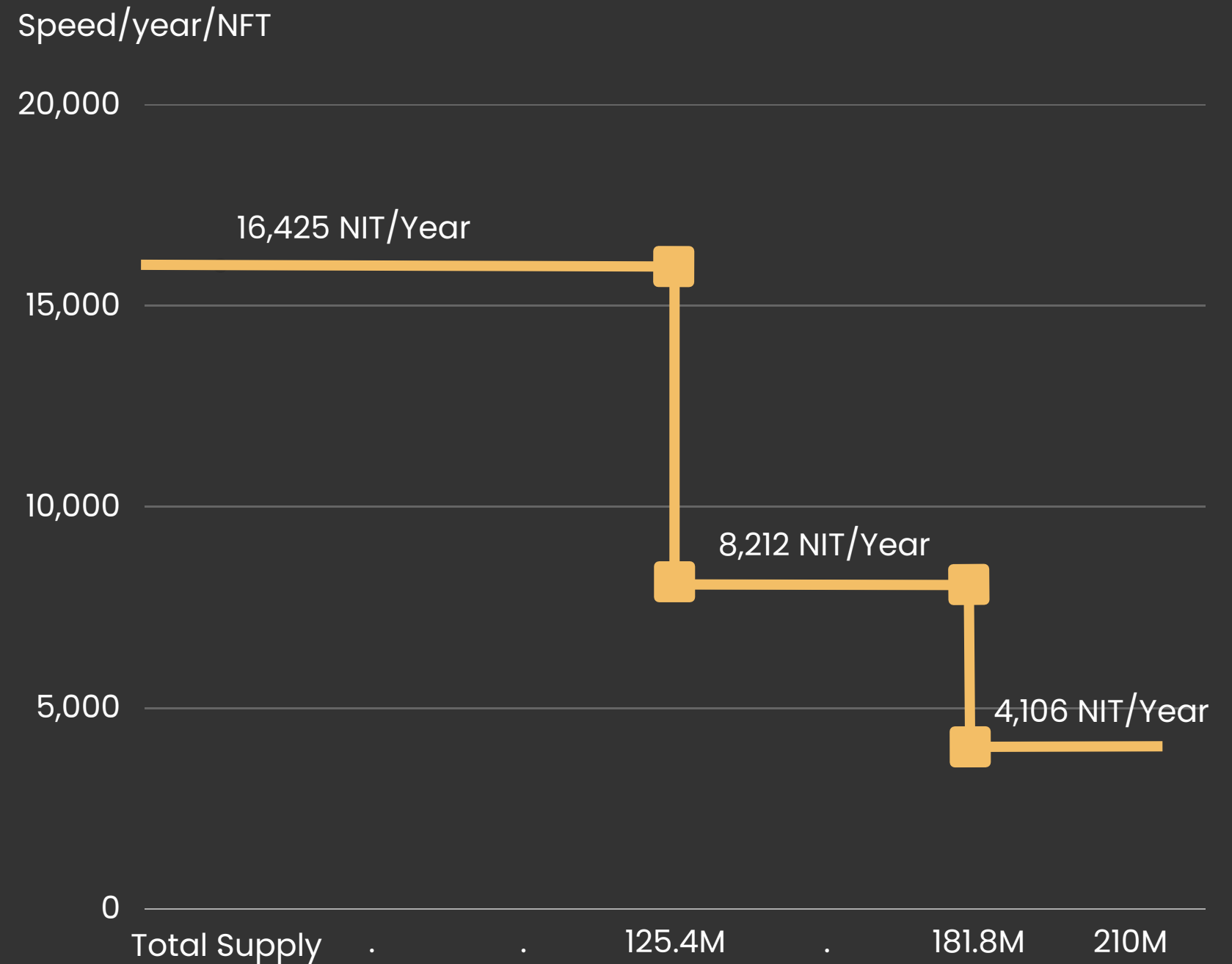
Mining Time: 365 days



NFT Mining Speed

Mining rate of each NFT is divided into 3 stages based on total mined supply

- <125.4M NIT, mining rate 16,425 NIT/year
- 125.4M < 181.8M Mining rate 8,212 NIT/year
- 181.8M < 210M Mining rate 4,106 NIT/year



AFFILIATE PROGRAM

Credit Wallet balance condition over \$50

20%

Direct commission

The person you directly refer will be called F1
You get 20% bonus when F1 buys NFT or any other product and NituAI profit trading sharing revenue with F1

50%

Maching Bonus

Get 50% of F1's income (counting all income including: NFT, profit sharing, Maching Bonus)

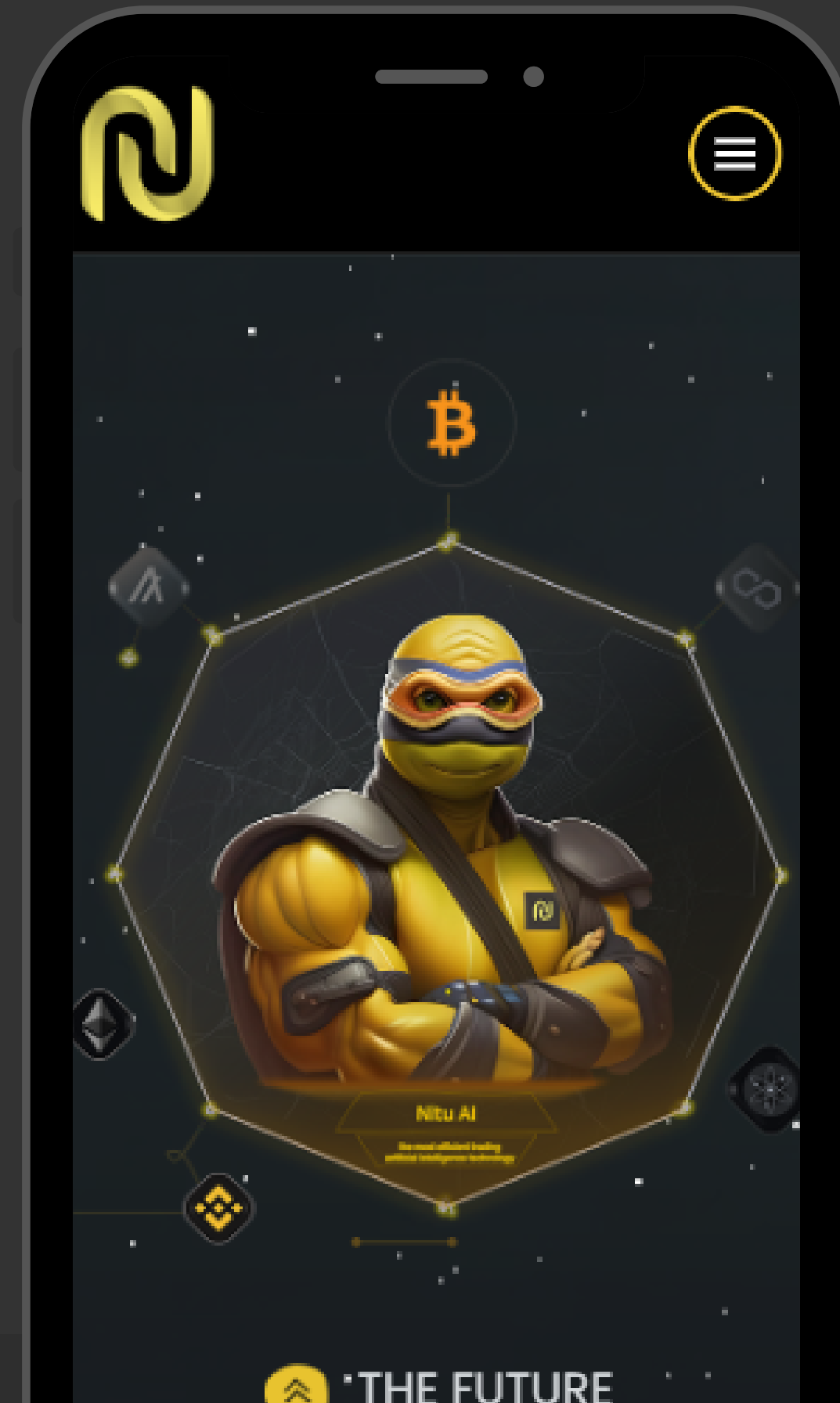
Contact Us

 support@nitu.trade

 nitu.trade

 twitter.com/NituDefi

 t.me/nitustrade





THANK YOU

